

Albertha Brown's Quilt Carrier Supply List, Photo and Instructions



- 1 ½ yards quilted reversible fabric
- 1 package double-folded ½-inch bias tape to match your fabric
- 1 heavyweight cardboard for bag bottom. I suggest the kind that a bolt of fabric is wrapped around (free at Joann Fabrics)
- 5/8 yards of fabric to cover the board—cut 2 rectangles 10 x 25. Choose fabric to coordinate with your bag; fabric does not need to be quilted.
- Pre-cut your cardboard to 24" long.
- 2 ½-inch dowels, each cut to 22 inches long. You may paint them if you wish.
- Sewing machine, Rotary cutter/scissors, Cutting board (large), Matching thread
- Large ruler (6" x 23")

Albertha's Quilt Carrier
(can also be used as an overnight bag or whatever)

Cutting instructions:

Fold your fabric up with right sides together.
Cut your back and front piece (25 wide by 22 long).
Cut your side panels (2 pieces 10 wide by 22 long).
Cut your bottom (1 piece 9 wide by 24 long).
*See cutting layout on next page.

Sewing instructions:

Now is the time to add a pocket if desired to the front and/or back piece.
With right sides facing each other, sew the two side pieces to the front and back pieces—use less than a $\frac{1}{4}$ seam allowance.

Turn inside out and re-sew the four seams. This is called a French seam.
You are now ready to attach the bottom of your bag. Sew the two long sides first. Now sew the short sides together. (I did not do a French seam here because of the bulk. You may serge or leave as is because the bottom cardboard should cover the seams.)

Fold the top of the bag down approximately 2 inches and sew all the way around your bag. (Option: Serge around the raw edge first or just fold under $\frac{1}{4}$ before sewing all the way around.)

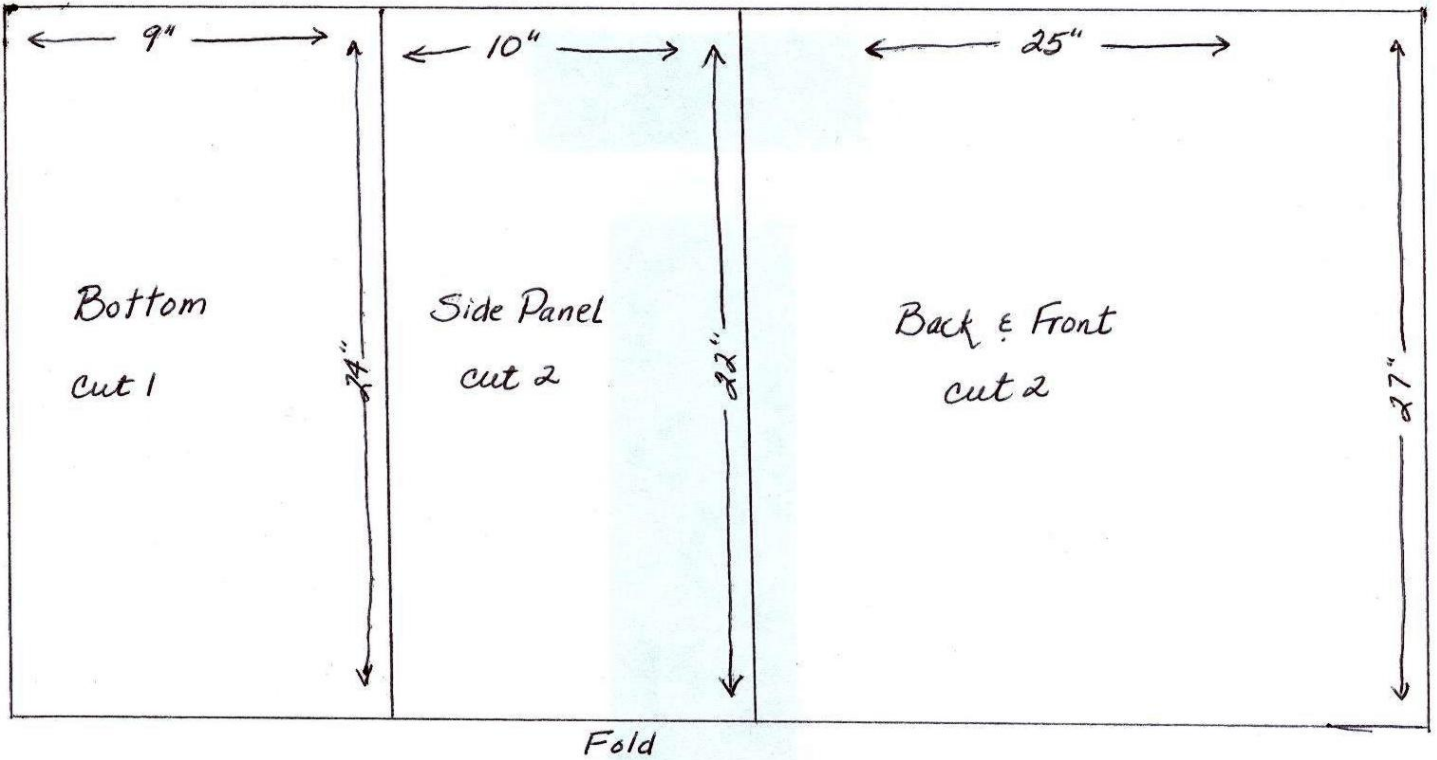
Attaching the handles:

Sew all the way around the 6 by 10 piece leaving a small opening for turning. Or you may sew the coordinated bias strip all around the piece rather than sewing around the piece first.

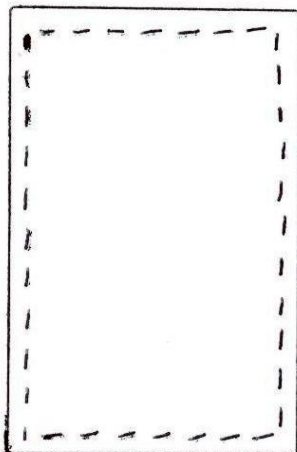
Fold and pin each handle next to the French seam just below the 2-inch fold around the top. Make sure that all four handles measure the same before sewing down.

Top stitch together close to the outside (front and back) of each handle. This will keep your dowel from sliding out. Place the dowel inside each opening of the handle (your may have to stretch it a little).

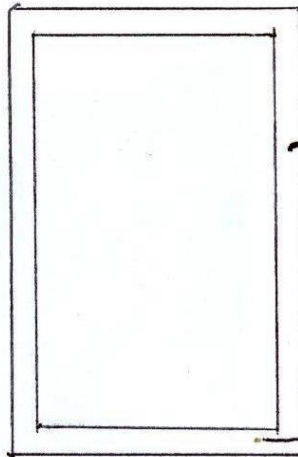
Cover the board as you wish. Place inside your bag and enjoy.



Coordinated Fabric Handle



OR



→ Bias Binding

Fold up 1/4" before sewing on binding